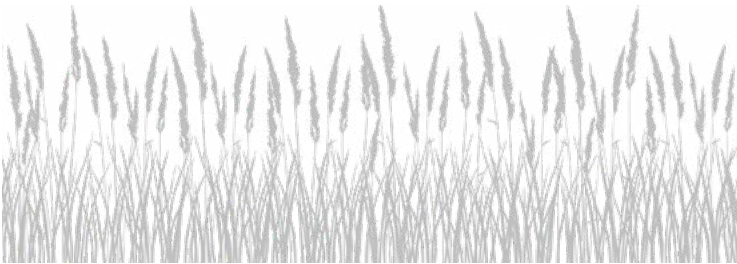


TEXAS ORGANICS COLLECTION

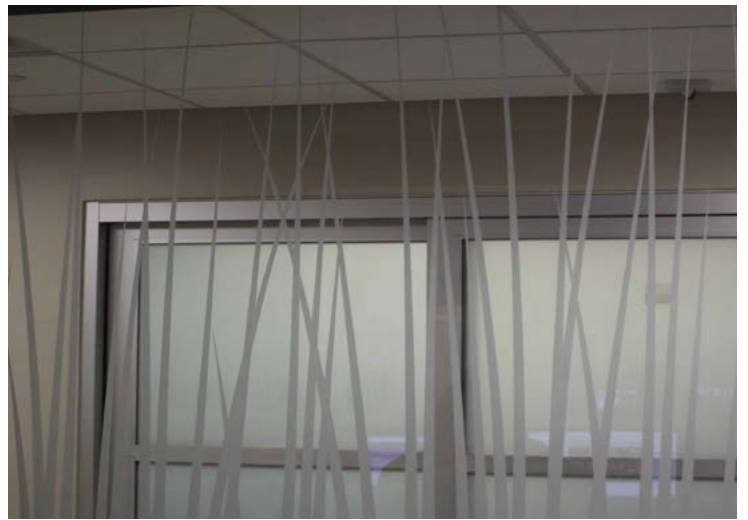
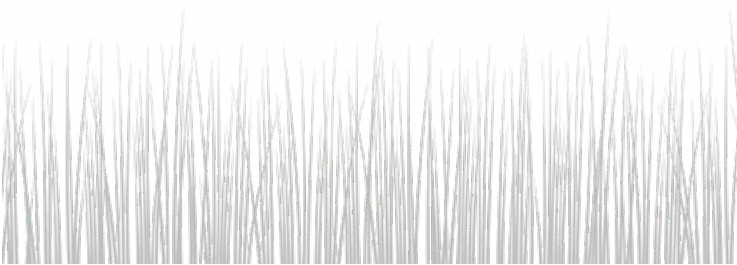
Lukenbach Lavender

You can almost smell the sweet scent when you first see our Luckenbach Lavender. Its denser bottom pattern, coupled with its more decorative top, provides a good deal of privacy, yet still maintains a welcoming feel, just like the town it is named for!



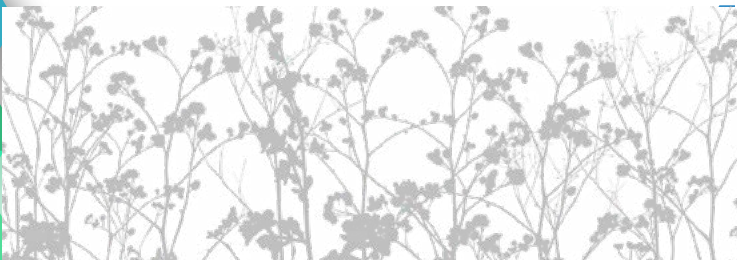
Guadalupe Grass

This pattern gives the impression of quiet summer days spent lying in the grass. Whether your intention is to be completely hidden or slightly covered, this pattern can be modified to increase the level of privacy while facilitating an airy flow between spaces.



Pecos Persimmon

Inspired by the Texas Hill Country, you can almost see the movement of the airy Pecos Persimmons swaying in the breeze. This pattern creates a distinct separation of spaces while allowing clear sight lines.



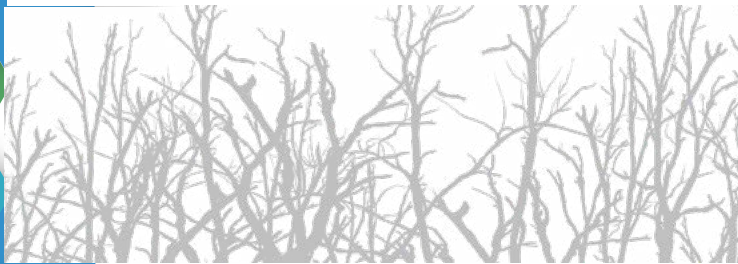
Fort Worth Fern

This broad leaf pattern invokes a lush surrounding. The fern is often an ornamental plant, which is how it is used in this pattern. By drawing your eyes upward, Fort Worth Fern adds life and depth to an otherwise two-dimensional element.



Brazos Branches

Brazos Branches bring to mind a walk on a brisk winter morning, with the sun filtering through the leafless branches. It is less dense than the other patterns, which acts to reduce the distance between distinct spaces.



Brazos Branches Double Sided

The double-sided branch pattern provides stark clear and frost areas created by printing a complementary reverse image on the second surface of the glass. This pattern is the most obscure of the collection while still allowing light and viewing through portions of the glass.

